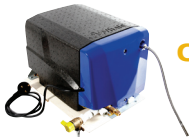




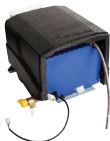
## Gas and Electric Water Storage Heaters



**High  
Capacity**

**WH1302**

- 13L capacity hot water tank
- Twin electric element  
1200W- Fast heat up (5.2A)  
600W - Low current draw (2.6A)



**Rapid  
Heat**

**WH0802**

- 8L capacity hot water tank
- Twin electric element  
1500W- Fast heat up (6.52A)  
750W - Low current draw (3.26A)

- No flue cover required
- Insulated
- Flue adaptor plate available AK1203

## Water Heater Fault Finding



No. of flashes	Fault	Remedy
1	No flame detected	Check gas supply.
2	Overheat	Check there is water in the appliance. We recommend you wait at least 5 to 10 minutes to allow the heater to cool before clearing lockout as described below.
3	Low/high supply voltage	Ensure voltage is above 10V at the heater and below 15V.
5	Other/internal fault	Attempt to clear lockout as shown below. If this fails contact <b>Heater Support: 0845 217 2933</b> .

**To clear any lockout switch off and back on within 2.5 seconds**