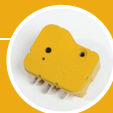




Easily retrofitted to a Whale® Watermaster pressure switch socket (only)

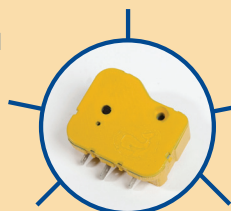
Kit includes:

- Watermaster IC unit
- Watermaster high-flow submersible pump



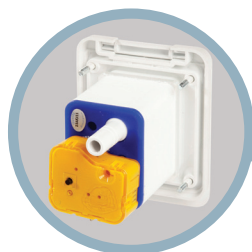
For trouble free operation and peace of mind

- Easily retro-fitted
- Protects and prolongs the submersible pump
- Built-in fault diagnostics system
- Service free, one-step calibration process
- No more pressure switch adjustments



Model:	Watermaster Pump Controller (with Intelligent Control)
Part No:	EP1632
Voltage: (normal operation)	Voltage range 9.5V d.c. to 14.5V d.c.
	Voltage range 8.5V d.c. to 9.5V d.c. (limited operation)
Nominal Current:	Operating 3.7 Amps, Standby 0.007 Amps
Recommended fuse size:	5 Amp automotive
Weight:	0.65kg
Materials:	Pump body: ABS, Seals: Nitrile®, Strainer: Polypropylene, Impeller: PBT, Cable: PVC, Seal: Nitrile®, Wire: PVC insulated copper, Hose: PVC,
Plug: PBT	Watermaster IC: Polycarbonate
Accessories: (available separately)	WF1230 – 12mm in-line water filter
Service Kits: serviceable part	Watermaster Pump Controller is not a serviceable part EP1612 replacement high-flow submersible pump
Performance Data @ 13.6V Discharge head:	Flow rate per minute / current draw: 0m (0ft) 15.8 ltrs / 3.8 amps 1m (3ft) 14.8 ltrs / 3.7 amps 3m (9ft) 12.8 ltrs / 3.5 amps
Compatible	For use with Whale® High-Flow pumps: Watermaster® (EP1612) ONLY
Operating temperature range:	3°C to 40°C
Storage temperature range:	-30°C to 60°C

Never adjust your pressure switch again



Intelligently controls the submersible pump

- Stops pump pulsating at high voltages
- Stops pump running continuously at low voltages
- Detects when water container has run out and turns pump off

How does Watermaster IC work?

In a pressure based water system a surge in battery voltage can cause the internal pressure switch in the socket to fluctuate. This leads to pulsations in water flow. Similarly, if the battery voltage drops, the pump may be unable to produce enough pressure to activate the pressure switch and the pump may run on continuously. Also, if the external water container runs out, the pump will continue to run on. This drains the battery and may reduce the life of the pump. Until now the only solution has been to manually adjust the pressure switch.

Watermaster IC eliminates these problems and the need for pressure switch adjustment.

Innovative electronic control circuitry monitors the level of battery voltage and compensates for any surges/reductions in battery voltage that can occur. It also cleverly senses when the water container runs dry and switches the pump off.

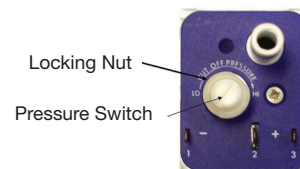
The result?

Never adjust your pressure switch again
enjoy a smooth, constant water flow.

Never let your pump run dry
protect and prolong your submersible pump.



Only for use with
Whale Watermaster sockets with built-in pressure switches (dark blue back - as pictured right)
(Part numbers: ES1001 / ES5001)





Whale Support

tel: +44 (0)28 9127 0531
fax: +44 (0)28 9146 6421
info@whalepumps.com
whalepumps.com

Call us directly for product and installation advice



Not compatible with inline pressure switch systems

